

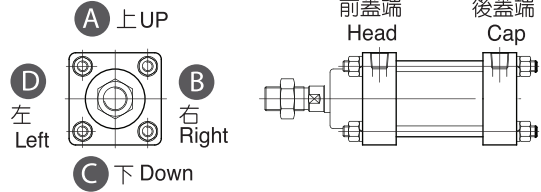


方型鑄件油壓缸特性資料 Specification

氣壓缸內徑 Bore sizes of cylinder(mm)	Ø30	Ø40	Ø50	Ø50A	Ø63	Ø80	Ø100	Ø125
缸管材質 Material of cylinder barrel	鋼管 Carbon steel STKM-13C OR/白鐵管 Stainless tubes SUS 304/鋁合金管 Aluminum alloy tubes							
使用壓力範圍 The range of pressure(MPa)	0.3-7MPa(3-70kgf/cm <sup>2</sup> )/另有特殊訂製,請來電洽詢							
使用溫度範圍 The range of temperature(°C)	NBR/PU{-25~+80°C}/VITON{-10~+150°C}							
使用速度範圍 The range of speed(mm/sec)	8~300(mm/sec)/另有低摩擦高速油封選用(1000mm以上/sec),請來電洽詢							
標準衝程活塞(PM)的長度Standard stroke of the piston (PM) length	30	30	30	30	30	35	50	50
各缸徑最大容許衝程 STROKE .mm Max.Permissible	本系列最長衝程為1000mm,如需更長衝程請來電洽詢							
衝程之容許公差/Tolerance of stroke	衝程/STROKE	100 以下	100~250	250~630	631~1000	1001~1600	1601以上	
JIS B 8354 B級/Refer to Right Table	容許差/Tolerance	0~+0.8	0~+1.0	0~+1.25	0~+1.4	0~+1.6	0~+1.8	
活塞桿螺紋加工精度/Accuracy of Threading at Rod End	JIS 6g/6H(相當JIS 2級)							

**MO-B-N-050-A-A-020-0100-N-N-AST000-N**



1	型式 / TYPE	B: 標準型 B: Standard type		D: 雙軸型 D: Double-Rod type							
2	磁石/MAGNET	R: 內加磁石 (適用Ø32~Ø125) N:沒有 R: with magnet inside(Applicable to Ø32~Ø125) N:No symbol									
3	鋼管內徑/外徑 CYLINDER TUBES	Ø30/Ø36	Ø40/Ø45	Ø50/Ø55	Ø50/Ø55	Ø63/Ø68	Ø80/Ø86	Ø100/Ø110	Ø125/Ø135		
	不銹鋼缸徑/外徑 STAINLESS TUBES	Ø30/Ø36	Ø40/Ø46	Ø50/Ø56	Ø50/Ø56	Ø63/Ø70	Ø80/Ø89	Ø100/Ø110	Ø125/Ø140		
	鋁管內徑/外徑 ALUMINUM TUBES	Ø30/Ø35	Ø40/Ø47	Ø50/Ø58	Ø50/Ø58	Ø63/Ø75	NO	NO	NO		
備註:本系列如訂製加磁石加鋁管時,最大使用壓力不得超過 3Mpa Note: This series such as custom magnet plus aluminum plus, the maximum working pressure must not exceed											
4	油封選用 SEAL SYMBOL 油封材質/Seal material	適用作動油種類 Kind of Fluid									
		一般礦物性作動油 Petroleum- Based fluid	水乙二醇 Water- Glycol fluid	磷酸酯油 Phosphate- Ester fluid	O/W作動油 Water in oil fluid	W/O作動油 Oil in Water fluid					
		A PU Polyurethane rubber	○	×	×	△	△				
		B NBR Nitrile rubber	○	○	×	○	○				
C VITON Fluoro elastomer	○	×	○	○	○						
備註: 允許使用 ○ 不允許使用 × 請與我們洽詢 △ Note: allowable ○ unallowable × consult us △											
5	入口口位置填入 Port position	前蓋端 Head	A:上(標準型)/B:右/C:下/D:左 A:UP(Standard)/B:Right/C:Down/D:Left								
		後蓋端 Cap	A:上(標準型)/B:右/C:下/D:左 A:UP(Standard)/B:Right/C:Down/D:Left								
		A=AA / B=BB / C=CC / D=DD E=AB / F=AC / G=AD / H=BA I=BC / J=BD / K=CA / L=CB M=CD / N=DA / O=DB / P=DC									
6	軸心/ROD	標準	Ø16	Ø20	Ø20	Ø25	Ø25	Ø30	Ø35	Ø50	
		最大	Ø16	Ø20	Ø20	Ø35	Ø35	Ø40	Ø55	Ø60	
7	行程/STROKE	填入需要之衝程 Max Permissible stroke									
備註:標準品最大衝程,內徑Ø32~Ø63衝程為1000mm,內徑Ø80~Ø125衝程為1499mm長衝程訂製時,因考量活塞側向支撐力與繫緊柱子鎖固強度,另外因考量油壓缸固定形式與軸心撓曲度等等問題,需在計算強度或參閱技術資料或敬請與我們洽詢											



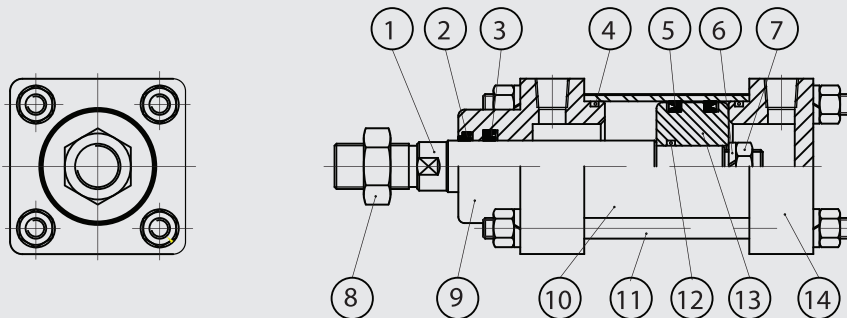
## 方型鑄件油壓缸採購指南 7Mpa Hydraulic Cylinders How to Order

Series

8	缸體 固定方式 BORE ACCESSORY	名稱 DESCRIPTION	記號 SYMBOL	略圖 CONFIGURATION	名稱 DESCRIPTION	記號 SYMBOL	略圖 CONFIGURATION
		前蓋矩形法蘭 Rectangular flange at cylinder head	<b>FA</b>		後蓋矩形法蘭 Rectangular flange at cylinder cap	<b>FB</b>	
		前後端凸耳形 Foot mounting side end angles	<b>LB</b>		U型搖擺座 U-shaped swing seat	<b>TC</b>	
		後蓋固定 單山型 Plate clevis at cylinder cap	<b>CA</b>		後蓋可拆 雙山型 Clevis fork at cylinder cap	<b>CB</b>	
備註：缸體固定如有其它方式可繪製圖面或與我們營業人員洽詢 Note: If the cylinder is fixed in other ways, you can draw a sketch or contact our sales staff							
9	軸心 用配件 ROD ACCESSORY	名稱 DESCRIPTION	記號 SYMBOL	略圖 CONFIGURATION	名稱 DESCRIPTION	記號 SYMBOL	略圖 CONFIGURATION
		Y型接頭 Rod Clevis	<b>MY</b>		Y型接頭附 插銷 Rod Clevis With Pin	<b>MYP</b>	
		I型接頭 I Rod end mounting	<b>MI</b>		浮動接頭 Compensating Joint	<b>KG</b>	
		魚眼接頭 Oscillating Eye	<b>PH</b>		T型接頭 T Rod end mounting	<b>HT</b>	
		焊接接頭 H Rod end mounting	<b>HH</b>		可調螺帽 Adjustable nut	<b>AST</b>	
備註：軸心固定如有其它方式,可繪製草圖或與我們營業人員洽詢 Note: If the axis is fixed in other ways, you can draw a sketch or contact our sales staff							
10	雙軸 可調行程	填入需要的可調行程 <b>AST</b> <input type="text"/> <input type="text"/> <input type="text"/> mm 無記號:沒有 / NO Symbol Adjustable Stroke					
11	近接開關 SENSOR SWITCH	無記號:無裝置(標準型)/B:兩端近接開關/X:近接在前/Y:近接在後/T:近接*3/U:近接*4 N: No symbol/B:Double side sensor switch/X:Rod-cover side sensor switch/ Y: Cap-cover side sensor switch/T:sensor switch*3/U:sensor switch*4					

### 方型鑄件油壓缸結構圖 Inside Structure and Parts List

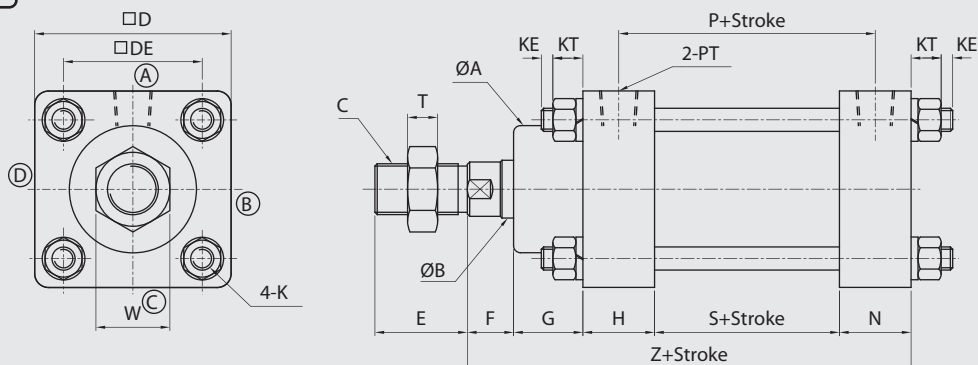
MOB



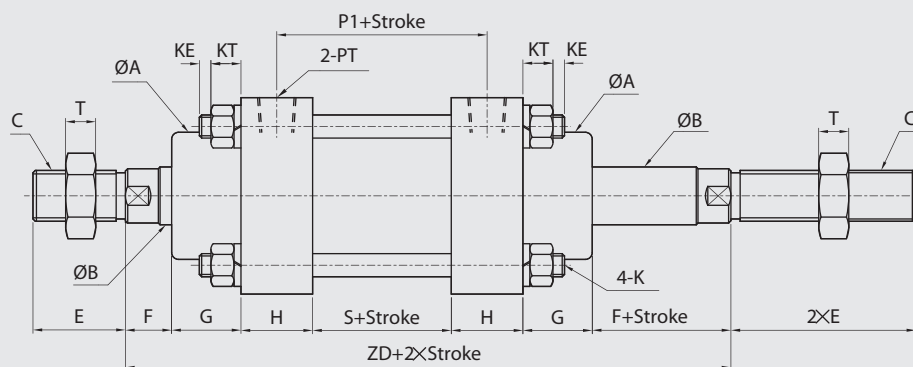
NO	零件名 Part name	數量 Quantity	NO	零件名 Part name	數量 Quantity	NO	零件名 Part name	數量 Quantity
1	活塞桿 Piston rod	1	6	彈簧華司 Spring washer	1	11	固定柱子 Tie bolt	4
2	刮油環 Dust wiper	1	7	螺帽 Nut	1	12	O型環 Gasket	1
3	軸用油封 Rod packing	1	8	軸心螺帽 Rod nut	1	13	活基本體 Piston	1
4	O型環 Gasket	2	9	前蓋 Rod cover	1	14	後蓋 End cover	1
5	橡膠活塞環 Piston packing	2	10	油缸本體 Cylinder tube	1	15		

## 方型鑄件油壓缸尺寸圖 7Mpa Hydraulic Cylinders Dimensional Features

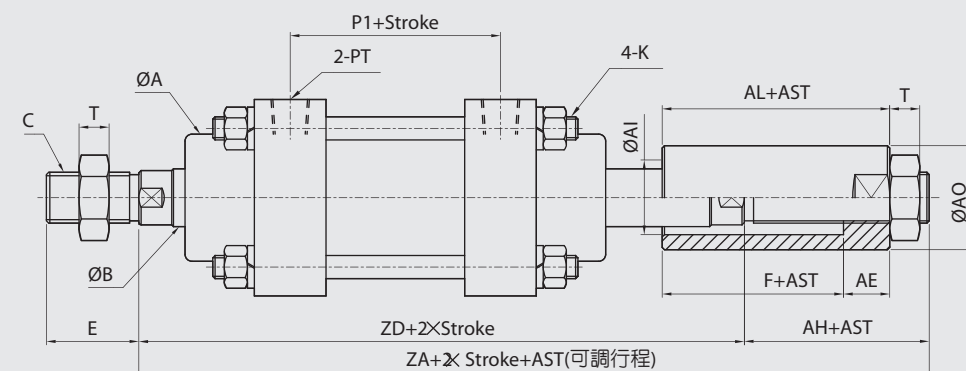
### MOB MO+B(標準型) TYPE



### MOD MO+D(雙軸型) TYPE



### MOD MOD+AST(雙軸附可調帽) TYPE



#### MOB-MOD TYPE

BORE	SIZE	ØA	ØB	C	□D	□DE	E	F	G	H	N	P	P1	PM	PT	K	KE	KT	S	W	T	Z	ZA	ZD	AH	A(可調帽) TYPE			
																										AE	ØAI	ØAO	AL
Ø30		30	16	M14XP1.5	50	34	28	13	15	25	25	75	75	30	1/4	M8XP1.25	8	8.5	50	22	8	128	181	156	25	15	20	30	30
Ø40		40	20	M16XP1.5	64	45	28	17	20	30	30	80	80	30	3/8	M8XP1.25	8	8.5	50	23.5	8	147	209	184	25	15	30	35	35
Ø50		45	20	M16XP1.5	70	50	28	17	20	30	28	79	80	30	3/8	M10XP1.25	10	10.5	50	23.5	8	145	209	184	25	15	30	35	35
Ø50A		50	25	M22XP1.5	70	50	40	20	30	30	28	79	80	30	3/8	M10XP1.25	10	10.5	50	32	13	158	245	210	35	20	35	45	40
Ø63		55	25	M22XP1.5	85	60	40	20	30	31	31	81	81	30	3/8	M10XP1.25	10	10.5	50	32	13	162	247	212	35	20	35	45	40
Ø80		62	30	M26XP1.5	106	74	40	20	32	37	35	91	92	35	1/2	M12XP1.5	10	13	55	35	13	179	268	233	35	20	40	50	40
Ø100		78	35	M30XP1.5	122	89	45	20	32	37	37	117	117	50	1/2	M14XP1.5	10	14.5	80	41	13	206	293	258	40	25	45	60	45
Ø125		85	50	M40XP2.0	147	110	55	25	31	40	40	120	120	50	1/2	M16XP1.5	10	17	80	55	15	216	317	272	50	30	60	80	55

#### 備註:

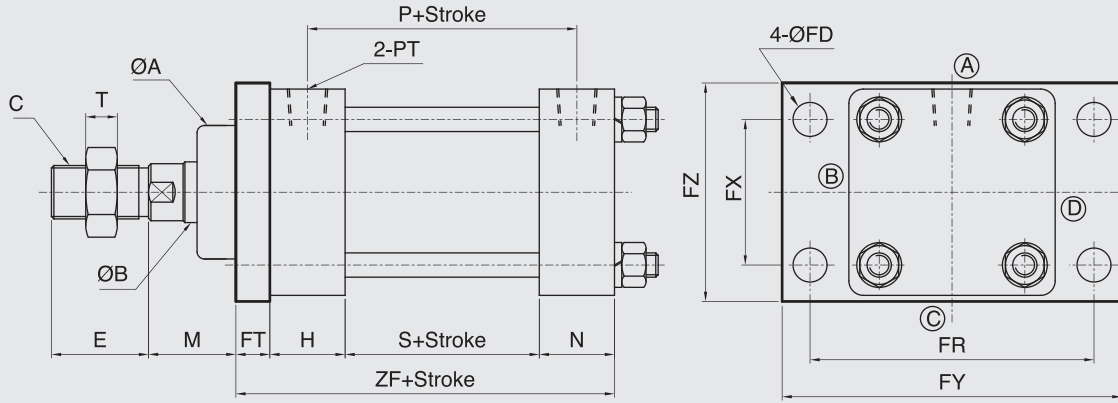
- 1.軸心加大如未註明長度尺寸時,依照本公司規定自行加工。
- 2.MO 行程未超過 1500mm時,活塞(PM)長度如附表,訂製行程如超過1500mm時,活塞長度參閱特性資料表。
- 3.MO 行程超過 2000mm(含)時,須加拉桿中間固定座。
- 4.MO40~MO50之行程超過500mm(含)以上時,軸心牙改為M18XP1.5。
- 5.AST為客戶指定之可調行程。

- 1.The length and size of axis were not specific to constructed must be according to our company design's modify without prior notice.
- 2.The MO series stroke exceed within (include)1500mm as see the property information of the length (PM) to order exceed stroke 1500mm.
- 3.When this series of stroke exceeds(includes) 2000mm,the fixed base of the pull rod must be added in the middle.
- 4.MO40~MO50 stroke exceed (include) 500mm, axletree broaden be M18xP1.5.
- 4.AST:Adjustable stroke by customer assignment.

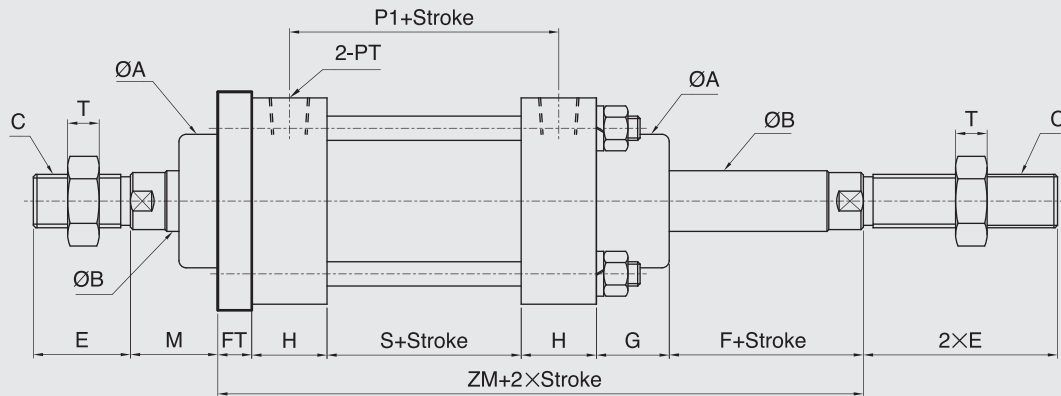
# MO-FA Series

## 方型鑄件油壓缸FA板尺寸圖 7Mpa Hydraulic Cylinders FA Dimensional Features

### MOB MOB+FA TYPE



### MOD MOD+FA TYPE



		MOB-MOD TYPE																	FA- TYPE					
BORE	SIZE	ØA	ØB	C	E	F	G	H	M	N	P	P1	PM	PT	S	T	ZF	ZM	ØFD	FT	FR	FX	FY	FZ
Ø30	30	16	M14XP1.5	28	13	15	25	17	25	75	75	30	1/4	50	8	111	139	9	11	80	34	105	52	
Ø40	40	20	M16XP1.5	28	17	20	30	26	30	80	80	30	3/8	50	8	121	158	12	11	93	50	115	72	
Ø50	45	20	M16XP1.5	28	17	20	30	26	28	79	80	30	3/8	50	8	119	158	12	11	93	50	115	72	
Ø50A	50	25	M22XP1.5	40	20	30	30	39	28	79	80	30	3/8	50	13	119	171	12	11	93	50	115	72	
Ø63	55	25	M22XP1.5	40	20	30	31	36	31	81	81	30	3/8	50	13	126	176	14	14	117	60	140	90	
Ø80	62	30	M26XP1.5	40	20	32	37	32	35	91	92	35	1/2	55	13	147	201	14	20	152	75	180	105	
Ø100	78	35	M30XP1.5	45	20	32	37	32	37	117	117	50	1/2	80	13	174	226	16	20	158	90	200	125	
Ø125	85	50	M40XP2.0	55	25	31	40	36	40	120	120	50	1/2	80	15	180	236	18	20	184	110	225	153	

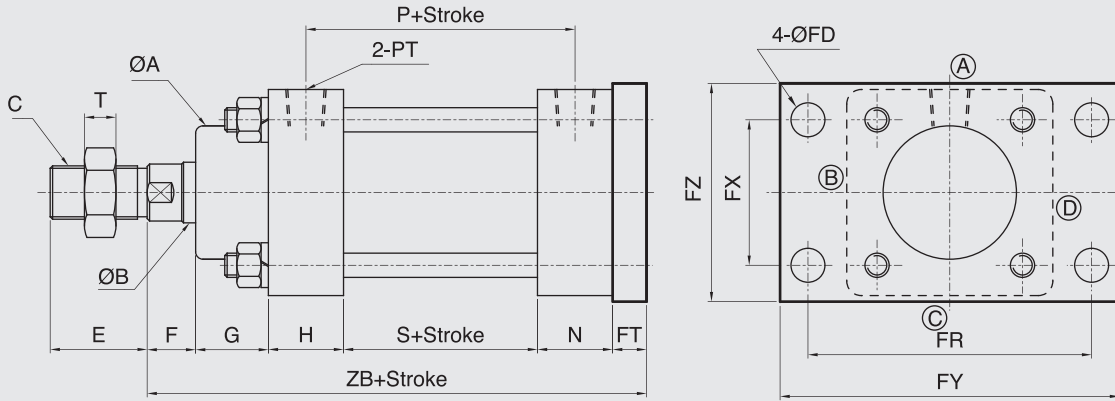
備註：

- 1.軸心加大如未註明長度尺寸時,依照本公司規定自行加工。
- 2.MO 行程未超過 1500mm時,活塞(PM)長度如附表,訂製行程如超過1500mm時,活塞長度參閱特性資料表。
- 3.MO40~MO50之行程超過500mm(含)以上時,軸心牙改為M18XP1.5。

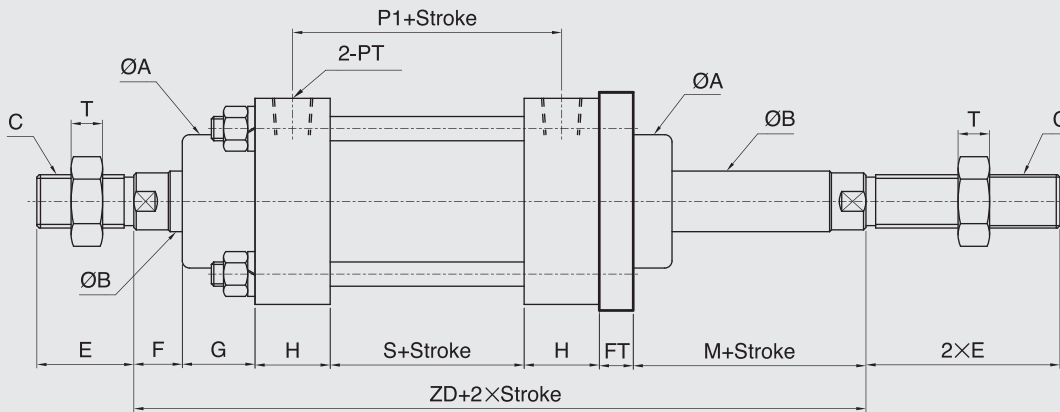
- 1.The length and size of axis were not specific to constructed must be according to our company design's modify without prior notice.
- 2.The MO series stroke exceed within (include)1500mm as see the property information of the length (PM) to order exceed stroke 1500mm.
- 3.MO40~MO50 stroke exceed (include) 500mm, axletree broaden be M18xP1.5.

## 方型鑄件油壓缸FB板尺寸圖 7Mpa Hydraulic Cylinders FB Dimensional Features

### MOB MOB+FB TYPE



### MOD MOD+FB TYPE



MOB-MOD TYPE																	FB TYPE							
BORE	SIZE	$\varnothing A$	$\varnothing B$	C	E	F	G	H	M	N	P	P1	PM	PT	S	T	ZB	ZD	$\varnothing FD$	FT	FR	FX	FY	FZ
$\varnothing 30$	30	16	M14XP1.5	28	13	15	25	17	25	75	75	30	1/4	50	8	139	156	9	11	80	34	105	52	
$\varnothing 40$	40	20	M16XP1.5	28	17	20	30	26	30	80	80	30	3/8	50	8	158	184	12	11	93	50	115	72	
$\varnothing 50$	45	20	M16XP1.5	28	17	20	30	26	28	79	80	30	3/8	50	8	156	184	12	11	93	50	115	72	
$\varnothing 50A$	50	25	M22XP1.5	40	20	30	30	39	28	79	80	30	3/8	50	13	169	210	12	11	93	50	115	72	
$\varnothing 63$	55	25	M22XP1.5	40	20	30	31	36	31	81	81	30	3/8	50	13	176	212	14	14	117	60	140	90	
$\varnothing 80$	62	30	M26XP1.5	40	20	32	37	32	35	91	92	35	1/2	55	13	199	233	14	20	152	75	180	105	
$\varnothing 100$	78	35	M30XP1.5	45	20	32	37	32	37	117	117	50	1/2	80	13	226	258	16	20	158	90	200	125	
$\varnothing 125$	85	50	M40XP2.0	55	25	31	40	36	40	120	120	50	1/2	80	15	236	272	18	20	184	110	225	153	

備註：

- 1.軸心加大如未註明長度尺寸時,依照本公司規定自行加工。
- 2.M0 行程未超過 1500mm時,活塞(PM)長度如附表,訂製行程如超過1500mm時,活塞長度參閱特性資料表。
- 3.M040~M050之行程超過500mm(含)以上時,軸心牙改為M18XP1.5。

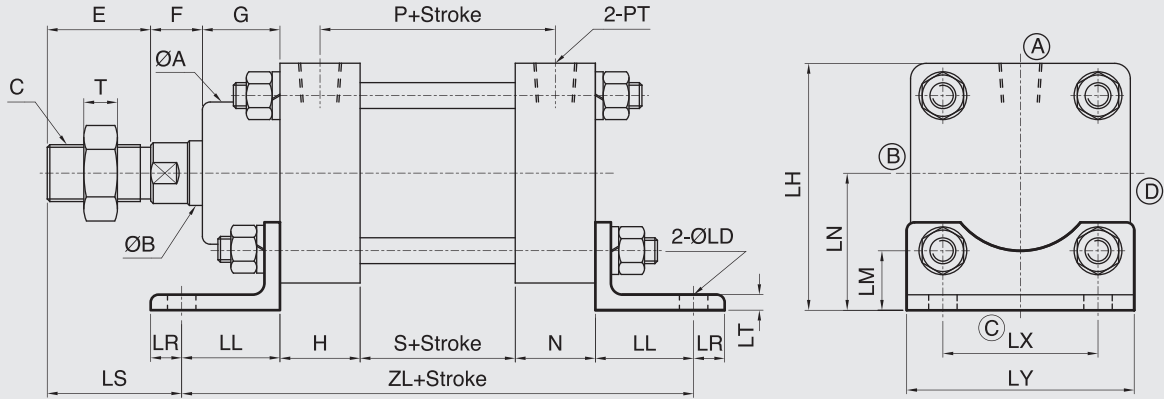
- 1.The length and size of axis were not specificed to constructed must be according to our company design's modify without prior notice.
- 2.The MO series stroke exceed within (include)1500mm as see the property information of the length (PM) to order exceed stroke 1500mm.
- 3.MO40~MO50 stroke exceed (include) 500mm, axletree broaden be M18xP1.5.

Ref. MA HA MT MTH SR MR MI,MK Pneu. accessories MO HO FO SO RO CRO HRO HSO HRO Hydra. accessories

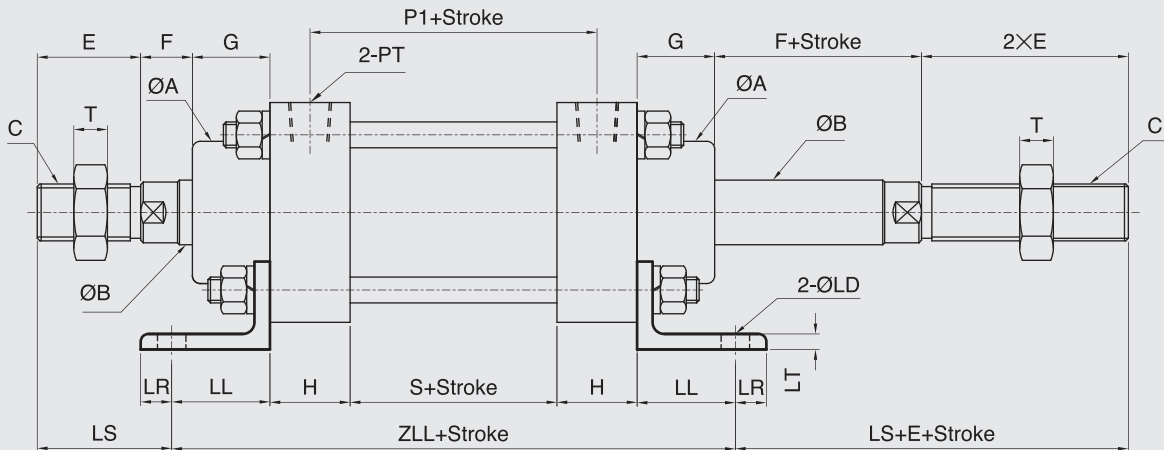
# MO-LB Series

## 方型鑄件油壓缸LB架尺寸圖 7Mpa Hydraulic Cylinders LB Dimensional Features

### MOB MOB+LB(架) TYPE



### MOD MOD+LB TYPE



MOB-MOD TYPE																	LB TYPE										
BORE	SIZE	ØA	ØB	C	E	F	G	H	N	LS	P	P1	PM	PT	S	T	ZL	ZLL	ØLD	LH	LN	LM	LL	LR	LT	LX	LY
Ø30	30	16	M14XP1.5	28	13	15	25	25	28	75	75	30	1/4	50	8	156	156	9	60	35	18	28	10	5	34	53	
Ø40	40	20	M16XP1.5	28	17	20	30	30	27	80	80	30	3/8	50	8	186	186	9	77	45	22.5	38	12	6	45	68	
Ø50	45	20	M16XP1.5	28	17	20	30	28	27	79	80	30	3/8	50	8	184	186	11	81	46	21	38	12	6	50	73	
Ø50A	50	25	M22XP1.5	40	20	30	30	28	52	79	80	30	3/8	50	13	184	186	11	81	46	21	38	12	6	50	73	
Ø63	55	25	M22XP1.5	40	20	30	31	31	52	81	81	30	3/8	50	13	188	188	11	96	53	23	38	12	6	60	88	
Ø80	62	30	M26XP1.5	40	20	32	37	35	56	91	92	35	1/2	55	13	199	201	13	113	60	23	36	14	6	74	105	
Ø100	78	35	M30XP1.5	45	20	32	37	37	49	117	117	50	1/2	80	13	250	250	16	139	78	33.5	48	27	9	89	127	
Ø125	85	50	M40XP2.0	55	25	31	40	40	60	120	120	50	1/2	80	15	262	262	18	161	87	32	51	24	9	110	150	

備註：

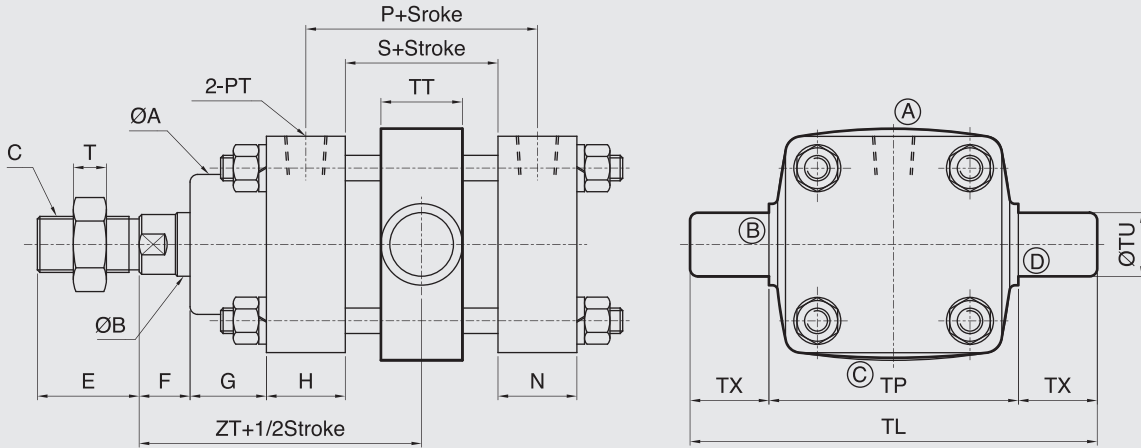
- 1.軸心加大如未註明長度尺寸時,依照本公司規定自行加工。
- 2.MO 行程未超過 1500mm時,活塞(PM)長度如附表,訂製行程如超過1500mm時, 活塞長度參閱特性資料表。
- 3.MO 行程超過 2000mm(含)時,須加拉桿中間固定座。
- 4.M040~M050之行程超過500mm(含)以上時,軸心牙改為M18XP1.5。

- 1.The length and size of axis were not specific to constructed must be according to our company design's modify without prior notice.
- 2.The MO series stroke exceed within (include)1500mm as see the property information of the length (PM) to order exceed stroke 1500mm.
- 3.When this series of stroke exceeds(includes) 2000mm,the fixed base of the pull rod must be added in the middle.
- 4.M040~MO50 stroke exceed (include) 500mm, axletree broaden be M18xP1.5.

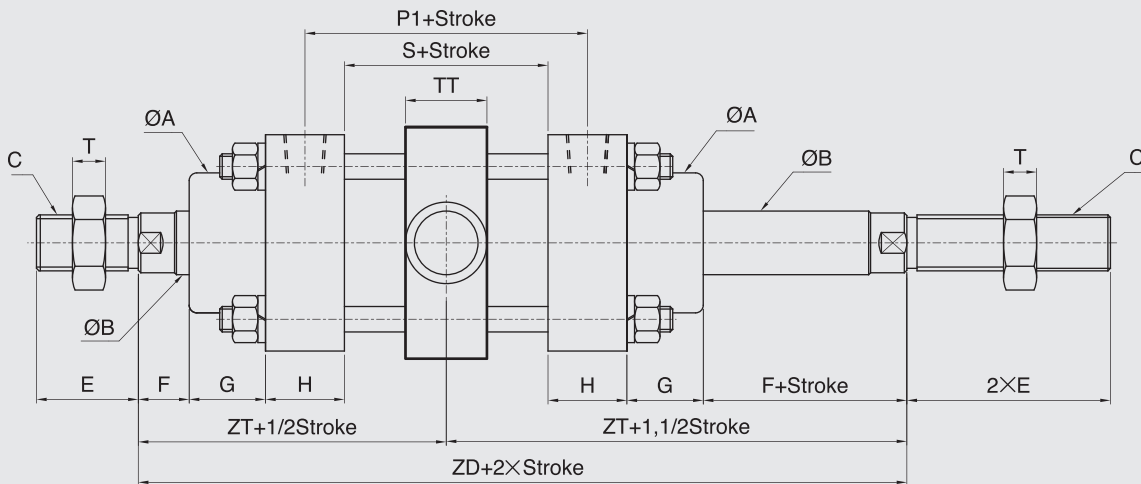
## 方型鑄件油壓缸TC尺寸圖

## 7Mpa Hydraulic Cylinders TC Dimensional Features

### MOB MOB+TC TYPE



### MOD MOD+TC TYPE



BORE	SIZE	MOB-MOD TYPE															TC TYPE				
		ØA	ØB	C	E	F	G	H	N	P	P1	PM	PT	S	T	ZD	ZT	TL	TP	TT	ØTU
Ø30	30	16	M14XP1.5	28	13	15	25	25	75	75	30	1/4	50	8	156	78	87	55	25	16	16
Ø40	40	20	M16XP1.5	28	17	20	30	30	80	80	30	3/8	50	8	184	92	127	69	25	18	29
Ø50	45	20	M16XP1.5	28	17	20	30	28	79	80	30	3/8	50	8	184	92	153	83	28	20	35
Ø50A	50	25	M22XP1.5	40	20	30	30	28	79	80	30	3/8	50	13	210	105	153	83	28	20	35
Ø63	55	25	M22XP1.5	40	20	30	31	31	81	81	30	3/8	50	13	212	106	170	98	32	25	36
Ø80	62	30	M26XP1.5	40	20	32	37	35	91	92	35	1/2	55	13	233	116.5	194	124	35	28	35
Ø100	78	35	M30XP1.5	45	20	32	37	37	117	117	50	1/2	80	13	258	129	222	142	38	30	40
Ø125	85	50	M40XP2.0	55	25	31	40	40	120	120	50	1/2	80	15	272	136	255	175	40	32	40

備註：

- 1.軸心加大如未註明長度尺寸時,依照本公司規定自行加工。
- 2.MO 行程未超過 1500mm時,活塞(PM)長度如附表,訂製行程如超過1500mm時, 活塞長度參閱特性資料表。
- 3.MO40~MO50之行程超過500mm(含)以上時,軸心牙改為M18XP1.5。

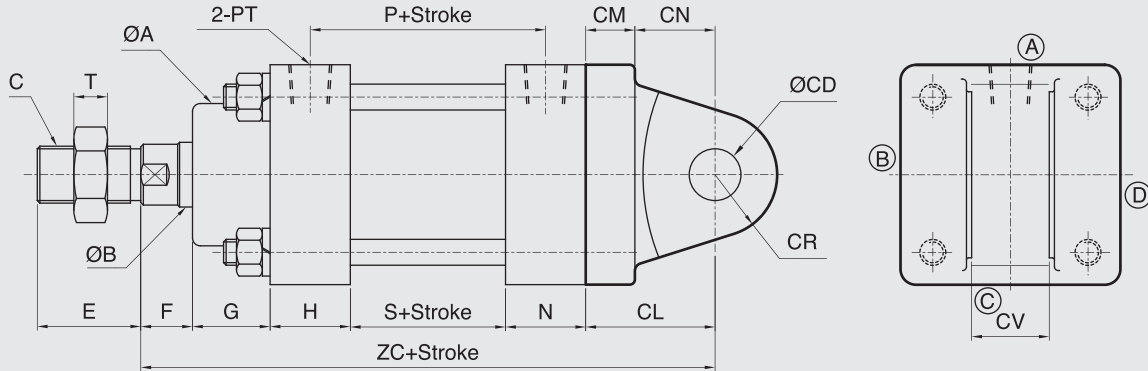
- 1.The length and size of axis were not specific to constructed must be according to our company design's modify without prior notice.
- 2.The MO series stroke exceed within (include)1500mm as see the property information of the length (PM) to order exceed stroke 1500mm.
- 3.MO40~MO50 stroke exceed (include) 500mm, axletree broaden be M18xP1.5.

# MO-CA, CB

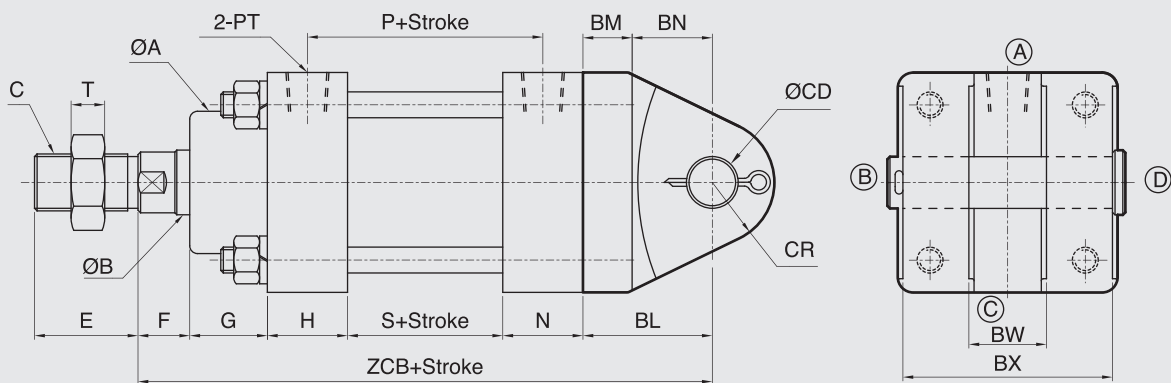
Series

## 方型鑄件油壓缸CA, CB尺寸圖 7Mpa Hydraulic Cylinders CA, CB Dimensional Features

### MOB MOB+CA TYPE



### MOB MOB+CB TYPE



BORE	SIZE	MOB TYPE														CA TYPE				CB TYPE						
		$\varnothing A$	$\varnothing B$	C	E	F	G	H	N	P	PM	PT	S	T	ZC	ZCB	$\varnothing CD$	CR	CL	CM	CN	CV	BL	BM	BN	BW
$\varnothing 30$	30	16	M14XP1.5	28	13	15	25	25	75	30	1/4	50	8	159	162	10	10	31	11	20	16	34	12	22	16	48
$\varnothing 40$	40	20	M16XP1.5	28	17	20	30	30	80	30	3/8	50	8	183	187	12	13	36	11	25	22	40	14	26	22	62
$\varnothing 50$	45	20	M16XP1.5	28	17	20	30	28	79	30	3/8	50	8	181	185	12	13	36	12	24	22	40	14	26	22	68
$\varnothing 50A$	50	25	M22XP1.5	40	20	30	30	28	79	30	3/8	50	13	194	198	12	13	36	12	24	22	40	14	26	22	68
$\varnothing 63$	55	25	M22XP1.5	40	20	30	31	31	81	30	3/8	50	13	212	212	20	24	50	19	31	30	50	18	32	30	81
$\varnothing 80$	62	30	M26XP1.5	40	20	32	37	35	91	35	1/2	55	13	247	247	30	30	68	18	50	30	68	18	50	31	61
$\varnothing 100$	78	35	M30XP1.5	45	20	32	37	37	117	50	1/2	80	13	279	279	35	35	73	18	55	35	73	18	55	36	76
$\varnothing 125$	85	50	M40XP2.0	55	25	31	40	40	120	50	1/2	80	15	289	289	35	35	73	18	55	35	73	18	55	36	76

備註：

- 軸心加大如未註明長度尺寸時,軸心尺寸依照本公司規定自行加工。
- MO 行程未超過 1500mm時,活塞(PM)長度如附表,訂製行程如超過1500mm時,活塞長度參閱特性資料表。
- MO40~MO50之行程超過500mm(含)以上時,軸心牙改為M18XP1.5。
- MO系列 $\varnothing 30$ - $\varnothing 125$ 標準CA配件為鑄造成形(材質FCD-45),另有鐵製焊接(材質SS41)可供選擇。
- MO系列 $\varnothing 30$ - $\varnothing 63$ 標準CB配件為鑄造成形(材質FCD-45),另有鐵製焊接(材質SS41)可供選擇。
- MO系列 $\varnothing 80$ - $\varnothing 125$ 標準CB配件為鐵製焊接(材質SS41)式。

- The length and size of axis were not specific to constructed must be according to our company design's modify without prior notice.
- The MO series stroke exceed within (include) 1499mm as see the property information of the length (PM) to order exceed stroke 1500mm.
- MO40~MO50 stroke exceed (include) 500mm, axletree broaden be M18xP1.5.
- MO series  $\varnothing 30$ - $\varnothing 125$  of CA standard accessories is cast type. (material:FCD-45) and iron type (SS41) for optional.
- MO series  $\varnothing 30$ - $\varnothing 63$  of CB standard accessories is cast type (material FCD-45) and material iron SS41 of welding type for optional.
- MO series  $\varnothing 80$ - $\varnothing 125$  of CB standard accessories is iron welding type. (material SS41).